



PUBLISHED SINCE 1948 FOR THE TOWN OF GLEN ECHO, MARYLAND ~ CHARTERED IN 1904 ~ APRIL 2026

TOWN COUNCIL NOTES

Mayor Costello, Town Manager Susan Theis, and three Council Members met for their monthly meeting at Town Hall on March 9. Council Member Wilson was absent. They were joined by more than a half-dozen residents in-person and virtually. The increased attendance could be attributed to the soon-to-be-open seat on the Council when Council Member Tanner steps down in May: Mayor Costello urged prospective appointees to attend. The meeting also included a presentation by Dan Israel from Compost Crew, which may have drawn more eyes.

Composting Pilot

Mr. Israel gave an overview of the program and answered any questions. Here are the basics: Interested residents can sign up now at www.compostcrew.com/signup. You purchase either a 7-gallon bin for \$20 (good for households of 1-4 people) or a 12-gallon bin for \$35 (good for larger households or those that cook a lot). You can see samples of the two bins at Town Hall. Residents who opt for the larger bin will pay \$4/month, while those with the

7-gallon bin will pay nothing. Pick-ups will be on Tuesday mornings starting on April 21 (the day before Earth Day!), and the bins and liners will be delivered to homes the week before. Note: Do not put the bin right next to your trash cans to make it clear to Key Sanitation that it's not trash.

Your kitchen scraps (see box for the full list of items you can compost) go to a farm in Montgomery County to be sorted and mixed with leaves and left until it becomes rich compost. Once

a year, you can request a bag of the compost, which they will deliver to you. If you have too little to warrant a pick-up or are out of town, you just go to the website and indicate that you'd like to skip a pick-up. Compost Crew is a Rockville-based company that services over 25,000 homes and businesses, including 8 households in Glen Echo.

Council Member Stiglitz asked about what metrics are tracked and what would constitute a successful pilot. Mr. Israel said we could expect 20-30% of households participating in the first year, a target of 40% over time, and a high-water mark of 50%. The Council will be monitoring the metrics closely, including if residents are skipping pick-ups without indicating it on the website. Mr. Israel said that participation rates are generally higher when the municipality is paying for it. The Town of Glen Echo is

paying the fees for the first year, the pilot program, and will decide how to proceed after that.

When you get your bin, there will be a card of helpful

WHAT CAN I COMPOST?

IF IT GROWS, IT GOES!

- Fruits and vegetables
 - Dairy
 - Pits and seeds
 - Bread
- Seafood and eggshells
- Coffee grounds and loose tea
- Meat and bones
- Paper towels and napkins
- Non-gloss cardboard (including pizza boxes)
 - BPI-certified compostables

WHEN IN DOUBT, THROW IT OUT!

NO glass, medicine, used Q-tips and tissues, cigarettes, diapers, feminine hygiene products, metal, batteries, pet waste, rubber, clothing, dryer lint, wax-lined containers, or plastics

THE ECHO

Distributed free to Glen Echo residents. Subscriptions for non-residents: \$12 per year (to subscribe call the Town Manager). Copies of *The Echo* are on file at Little Falls Library. Also provided online at www.glenecho.gov. Total circulation: 190.

EDITOR Emily Parsons
(TheEchoEditor@gmail.com)

ART EDITOR Mary Parsons

CONTRIBUTORS Thom Amdur, Carol Barton, Dia Costello, Matt Costello, Liam Dobson, Emily Ellis, Pete Epanchin, Charlotte Taylor Fryar, Angela Hirsch, Mona Kishore, Gloria Levin, Martha Morris Shannon, Holly Shimizu, Patty Sieber, Corrina Spealman, Dan Spealman, Bill Vincent, Bonnie Whyte, Julia Wilson

COPY EDITORS Maire Hewitt, Julia Wilson

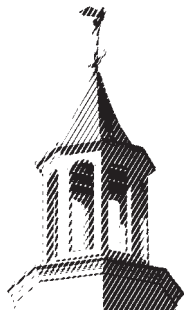
ADVERTISING Patty Sieber
(EchoAdRep@gmail.com)

DISTRIBUTION Janice Henderson, Maire Hewitt, Aaron Hirsch, Cathie and Willem Polak

CIRCULATION Julie Lull

Next Deadline: April 20, 2026

Letters to the editor are welcome. They must be signed. Articles for publication are also solicited. Please send comments about *The Echo* to the editor, the Mayor, or any Council Member. Volunteer reporters are always needed.



TOWN OF GLEN ECHO

MARYLAND 20812

Phone: 301-320-4041 Fax: 301-320-3639

Website: www.glenecho.gov

Office: 6106 Harvard Avenue

Mailing Address: P.O. Box 598, Glen Echo, MD 20812

MAYOR

Dia Costello

COUNCIL MEMBERS

Dan Spealman

Matt Stiglitz

Dawn Tanner

Julia Wilson

TOWN MANAGER

Susan Theis (townhall@glenecho.gov)

Next Council Meeting: April 13, 2026, 7:30 PM

tips included, and questions can be directed to Town Hall. Resident Kellan Steele said that she's been composting for a decade and would be happy to field questions. Her pro tip: In steamy summer months, keep your compost in the freezer until it's time to put it out!

Odds and Ends

Resident Alexis Feringa had new "Poop Fairy" signs made and will be putting them along MacArthur Boulevard. The Mayor commented on how successful Winterlude was again this



year. The event raised over \$800 for Greentree Shelter. As part of National Volunteer Month, Mayor Costello plans to hold an event to recognize all of the volunteers in Town with a reception on April 10, from 5-7 PM, at Town Hall.

The February 26 community meeting to discuss the recent sewage spill in the Potomac that Mayor Costello helped organize was well attended with more than 250 people, including many local officials, showing up. There is a follow-up meeting scheduled in March, and the Mayor will also be meeting with a group to test the sediment at Sycamore Island for contamination levels. It was raised that there should be a warning system for our waterways much like the sys-

tem notifying people when the air quality is dangerous.

The Mayor submitted a letter on behalf of the Town in response to the NPS' Environmental Update regarding future Glen Echo Park improvements. She noted that there isn't any money at this time to realize any of the proposals. Following a Park security meeting back in February, the Mayor said that none of the agreed upon improvements have been made. They include adding a light to the little overlook in the Park's lower parking lot, as well as cutting back vegeta-

tion and posting new signs about Park hours. A resident asked what kind of crimes people should be reporting. Mayor Costello mentioned people lingering in the parking lot at night, lighting fireworks, or appearing to conduct drug sales.

There were some clarifications made about various items in the fiscal year 2026-2027 budget. The proposed budget will be shared soon with residents for their feedback ahead of introducing it at the April meeting and passing it at the May meeting.

Town Expenses

In February, the Town paid \$3,653 to Key Sanitation and \$2,170 to Level Green (non-snowcrete snow removal). —EMILY PARSONS

It is often said that the best time to plant a tree was twenty years ago, but the second-best time is now. Two years ago, we took that advice to heart in Glen Echo. What was once an empty, sunny field between Bowdoin Street and the Irish Inn has been transformed into the Glen Echo Community Garden.

As we move into our third season, the garden has transitioned from a plot of vacant dirt into a genuine hub of common ground. While we love a good harvest, the garden committee has always hoped this space would offer more than just a place for individuals to grow a few lonely tomatoes in isolation. The goal is to create a spot where you can't help but run into a neighbor and strike up a real conversation—whether you end up debating the merits of heirloom beans or just discussing the weather is entirely up to you.

To reach our full potential, however, we need more hands in the dirt. We are looking for everyone: young families, long-time

IN YOUR BACKYARD

residents, seasoned green thumbs, and even those who have a track record of accidentally killing every succulent they've ever owned.

Here are three reasons why you should join the community garden this year:

1. A new way to connect with neighbors:

Glen Echo is already a well-connected town, but there is a unique bond formed when tilling the soil and working on a shared resource. Stepping out of our houses and into the shared patch of dirt offers a different kind of fellowship than a quick wave from the driveway. This year, we hope to have monthly community days throughout the growing season. These are specific opportunities for gardeners to work side-by-side, share seeds and stories, and strengthen the ties that make our Town feel like home.

2. Shared bounty: There is immense satisfaction in bringing home



a basket of food you grew yourself. Our climate is particularly well-suited for heavy hitters like zucchini, yellow squash, and bush beans. You can also expect great success with basil, okra, towering sunflowers, and crisp cucumbers. Beyond individual plots, our community sections have also featured basil, corn, kale, peppers, and tomatoes that any resident can harvest. By joining the garden, you contribute to a collective bounty that ensures fresh, organic produce is available to the whole neighborhood.

3. Shared knowledge

and resources: If you are worried about your lack of a green thumb, this is the place to start. We are committed to helping people learn the art of gardening, from the basics of soil health to the specifics of "hilling up" potatoes for a larger harvest. We also want to make it easy to get started; we always have extra plants and seeds to share through the Town's annual plant exchange and throughout the growing season.

As we look toward the 2026 season, memberships for our 3'x5' (\$50/year) and 3'x10' plots (\$75/year) are open. Dues are strictly for water access and shared compost and wood chips. Whether you are a seasoned gardener or someone just looking for a few extra zucchinis through the year, there is a place for you here. If you're interested in joining, send me, Aaron Hirsch, or Elaine Bodlander an email: ctfryar@gmail.com; awhirsch@gmail.com; elainebfriends@gmail.com. —CHARLOTTE TAYLOR FRYAR



Glen Echoan Cristina Bermudez provides delicious, healthy family meals made with fresh, locally-sourced organic ingredients. Delivered straight to your door.



Old twist
CATERING AND BAKERY

Visit oldtwist.com or contact cristina@oldtwist.com



Stuart & Maury, Inc.
Realtors



Patty Sieber
240-743-7194 cell
301-654-3200 office

"Neighborhoods along the Canal are my specialty—I live there and love it!"



DISTINCTIVE LANDSCAPES
 INNOVATIVE | SUSTAINABLE | MAINTAINABLE

Exquisite Garden Design & Installation
 Decks & Patios | Custom Fences | Arbors & Pergolas
 Garden Walks & Walls | Water Features & Lighting
 Planting & Maintenance

BEST of BETHESDA AWARD WINNER | WASHINGTONIAN AWARD WINNER

Mark Willcher Landscape
 Design & Build
*Building Sustainable Gardens
 Since 1980*



www.markwillcherco.com
 240-672-3191
 info@markwillcherco.com



Space to Reset. Space to Breathe.
Space for YOUR Wellness Event or Session!

The Journey Space is a tranquil sanctuary offering distinctive rental spaces for yoga, meditation and other wellness events and treatment modalities...all just minutes from Bethesda and the DC and Virginia lines.

Host your next great offering here! And explore a host of programs from talented teachers.



6110 Oberlin Ave., Glen Echo
 thejourneyspace.com
 @thejourneyspace (FB/IG)
 thejourneyspace@gmail.com
 301.613.6830

KATHLEEN RYAN
 WITH YOU EVERY STEP OF THE WAY



Licensed in DC, MD & VA
 CRS, GRI, e-PRO, SRES, TRC
Mobile (240) 418-3127
 kathleen.ryan@rlahre.com
 www.rlahre.com

RLAH
 REAL ESTATE



4600 N Park Ave #100 | Chevy Chase, MD 20815 | 301.652.0643



GRIFFITH ENERGY SERVICES, INC.

A Full Service Heating & AC Company
 Specializing in Oil-to-Gas Conversions,
 Heat Pumps, Central AC, and Fuel Delivery

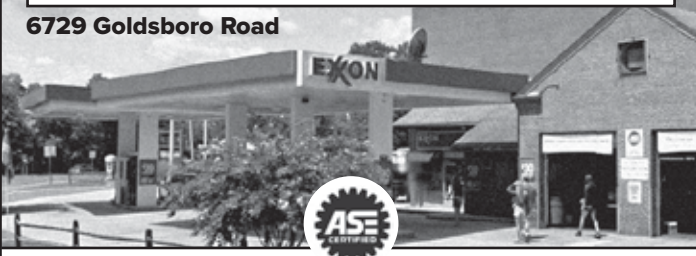
1-888-474-3391

www.GriffithEnergyServices.com

'Doggone Dependable Since 1898'

GLEN ECHO EXXON

6729 Goldsboro Road

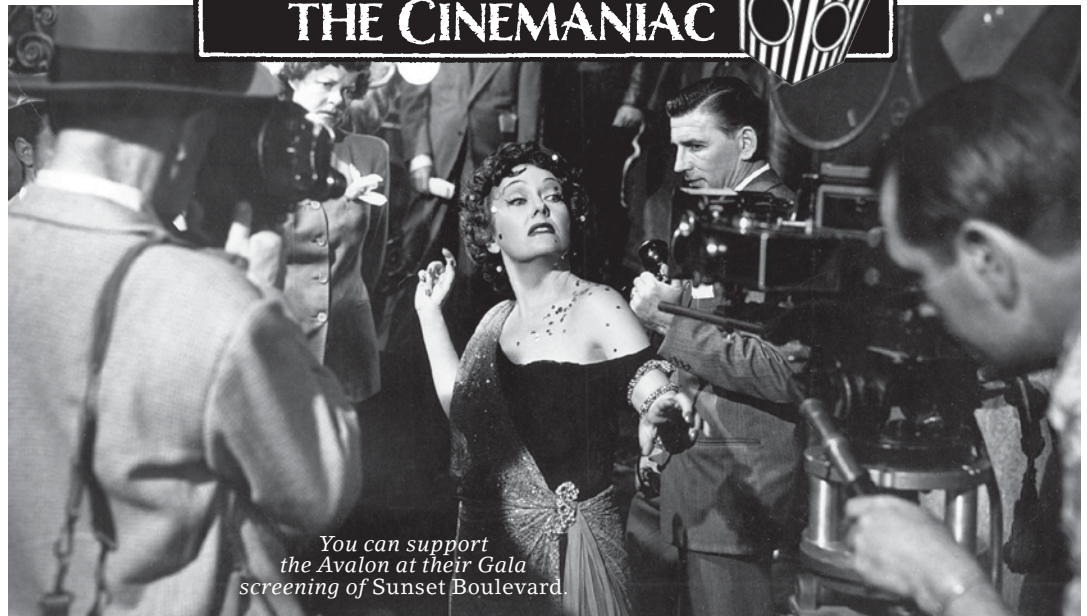


Mo Abutaa
 Service Manager

A.S.E. Certified
 MD Inspector

(301) 229-8666
FAX: (301) 229-0131

The Avalon: It's an important time of year for the Avalon. Each spring, the beloved theater hosts its annual Gala to raise money so that DC's only non-profit arthouse can continue to serve the community. Less than 15 minutes away, it's a local icon, worth treasuring and supporting. While the Avalon does well at the box office, that alone doesn't keep the theater going; it also relies on memberships, grants, fundraisers, and donations. So, please consider joining the growing number of Glen Echoans who support the Avalon through one of those avenues. The annual Gala this year is May 3, but I'm promoting it in the April column so that you have plenty of time to get tickets to what is often a sold-out show. This year, the Gala film is the classic noir *Sunset Boulevard*. Directed by Billy Wilder, it follows a struggling screenwriter who becomes entangled with a delusional former star who wants to return to her former glory on the silver screen. When it was released, *Time* magazine called it "a story of Hollywood, mostly at its worst, brilliantly told by Hollywood at its best." It was nominated for 11 Oscars, won 3, and is often listed as one of the greatest movies of all time. The movie will be followed by a discussion hosted by Bob Mondello of NPR, who will be interviewing David Lubin on his new book about



You can support the Avalon at their Gala screening of *Sunset Boulevard*.

the film. A \$300 contribution gets you access to the catered reception prior to the program, preferred reserved seating for the movie, and your name listed in the printed program. Or, for \$65 you can skip the fancy hors d'oeuvres and wine and just watch the show. If you're interested in buying your tickets through me, I can get you a 10% discount.

The Angelika: I just realized that, having trekked to DC to track down a few movies for the Oscars, I've now been to every operating theater in the District. So, I'll spend a few words on my impressions of the theaters I've recently experienced. The Angelika, as with other buildings nearby, was created out of an old brick warehouse, so it combines industrial cinder brick walls with stylish chandeliers, classic movie posters, comfy couches, and ping pong tables if you want to hang out

at the bar and feel like Marty Supreme for a little before your movie starts. Also, there are plenty of great dining options near the Angelika at Union Market. (There's a reason why dinner and a movie is a tried-and-true formula.) On April 20, you can catch the classic *To Kill a Mockingbird*, with Gregory Peck at his most noble as a southern lawyer defending a black man unjustly accused.

Landmark, Atlantic Plumbing: Atlantic Plumbing, which is the other theater I recently checked off my list, was constructed to appear as if it was built from an old warehouse like the Angelika, but it's a relatively new building. So, all of the industrial brushed brass and stylish Edison bulbs are just for the effect. Still, the full bar seems like a nice place to hang and there are plenty of great food venues in the area, not the least of which is DC's most historic eatery,

Ben's Chili Bowl. (If you've not been, you absolutely must experience this iconic spot, but I'd wait until they reopen their original location after its refurbishment to get the full effect.) The venue itself is made up of several tiny, 50-seat theaters that can make it feel like you're in an intimate, private screening room. *Project Hail Mary* should still be playing there in April. I have to admit I'm a bit skeptical after seeing the trailers. Ryan Gosling is a high school science teacher who is the only person who can save the Earth? Along with his cute alien buddy? But the sci-fi adventure is supposedly funny, heartwarming, and thrilling; and it's gotten almost universal critical acclaim. Plus, it's brought to you by the writers of *The Martian* and the directors of *The Lego Movie*, so if anyone can pull it off, it's this team. —DAN SPEALMAN

Yoga • Pilates • Zumba • Meditation

In-person & Online Classes • *Adults & Kids*



**New
Student
Special
3 for \$45**

*Come see us in our
Beautiful, Peaceful space
upstairs at
the Glen Echo
Shopping Center*



240 535 5526 • SimonSaysYoga.com

HOUNDS ABOUT TOWN

Santee, the border collie-chow mix living on Yale Avenue, is in charge wherever he goes. When in Cooksville, Maryland, Santee oversees the Barrow family farm. “Out there, he has the run of the place,” says Carol Barton. If a car approaches the farm, Santee will herd it all the way to the house. While he may have free rein on his family’s 300-year-old farm, he’s almost always at Henry Barrow’s side, supervising the day’s work. But at 6:30 PM sharp, if Henry is still on his tractor, Santee will park himself in front of it until he is given his



dinner. Back in Glen Echo, Santee—who is named after a South Carolina river where Henry’s family has roots—enjoys spending time in the park as long as the carousel isn’t running. To Santee, the carousel looks like a bunch of unfamiliar animals that he should be herding. So, if he gets too close, Santee will “stop and put on his brakes,” says Barrow. His curiosity can get the best of him, as on his first Thanksgiving when he took a bite out of both the pumpkin pies that Carol had baked. And this 11-year-old is a real guard dog. But do not let his loud barking fool you, as Santee is much sweeter than he sounds behind the door. “He loves everyone,” says Barrow, “he’s just making sure you know who’s boss.” —LIAM DOBSON



- Cat care
- Midday dog walks
- Overnight housesitting

301-229-4774

petsbypatricia@gmail.com
www.petsittingbypatricia.com

**YOUR LOCAL
MORTGAGE
LENDER**



SCAN ME
to learn more.

Patrick L. Hooper

Senior Loan Officer, NMLS #322651
c: 301.437.4667
Purchase/Refinance/Renovation

ph: 800.333.3004 x3422
www.PatrickHooper.biz



embrace home loans

Embrace Home Loans, Inc. NMLS #2184, 25 Enterprise Center, Middletown, RI 02842, Phone 800.333.3004, www.nmlsconsumeraccess.org



GLEN ECHO HARDWARE

**7303 MacArthur Blvd.
Bethesda, MD 20812
301-229-3700**

**Authorized Distributor of
Makita • Paslode • Fein
Benjamin Moore Paints**

OUT AND ABOUT

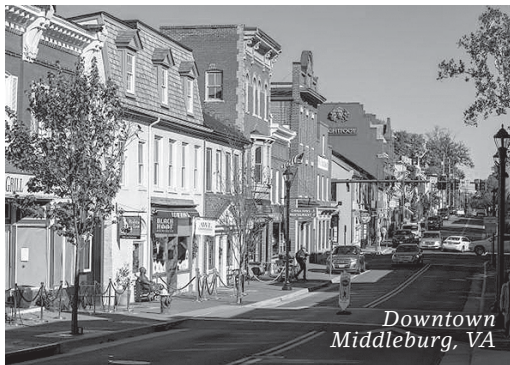
We'd survived the holiday bullet train of Christmas > Birthdays > Snowcrete > Valentine's Day and five million activities in between and were looking for a way to celebrate and also recuperate. The requirements were simple: short drive, easy for an overnight, relaxing, and ideally someplace we had not yet visited. Enter Middleburg, VA.

Despite living in the DC area for over 15 years, I had never been to Middleburg, so I was excited to explore the town. After looking into several enticing lodging options including the Red Fox Inn and the Goodstone Inn, we decided to go with the Salamander. The resort was opened in 2013 by Sheila Johnson, the first Black female billionaire and a local business legend. I'd heard great things about the property but always wrote it off as being overpriced. It is most definitely a splurge, but I will say the experience exceeded my expectations. More on that later.

We started our adventure in town with sandwiches at the Middleburg Deli, the perfect spot to get our bearings, fuel up, and people watch. We made our way down the main drag, Washington Street. The entire 'downtown' area cov-



Salamander



Downtown Middleburg, VA

ers about 1.5 blocks, but there are plenty of interesting storefronts to pop into. I loved wandering through the massive antiques shops (each with lots of equine artifacts), clothing boutiques, and homegoods stores, where I stocked up on some host gifts. The town was the perfect place to spend a beautiful afternoon but was also easily covered in 90 minutes. This worked for us, because it was time to check into our lodgings.

From the moment we arrived at the Salamander I was so impressed by the consistent care and kindness from every staff member. They were all incredibly helpful and went out of

their way to ensure we were having a good experience. After grabbing a cocktail from the Goldcup Wine Bar we wandered outside and noted the number of couples, girl groups, and families enjoying

the expansive back lawn. There was frisbee, firepits, corn hole, and some miniature ponies spread out for people to enjoy.

Our room was expansive but also cozy and had a firepit and a balcony overlooking said lawn. Because we were there celebrating, the staff sent up a cake and ready-to-mix cocktails with instructions. After relaxing and enjoying our accommodations, we headed into town (via the complementary car service) for a memorable dinner at Red Fox Inn. The Red Fox is hailed as one of the oldest inns in America and has hosted former Presidents and other famous diners over the years.

The meal—a pre-fixe four-course menu on the weekend—did not disappoint.

To work off our meal, we hit the Salamander's trails the next day. I couldn't get over the number of well-kept hiking trails and walk-

ing paths that crisscross the property through the woods. We eventually wandered to the front lawn, and Justin was thrilled to find a putting green that had a number of golf clubs waiting for anyone hoping to get some swings in. These small details are what make the property more of a destination than a hotel. While we didn't check out the spa, the space looks beautiful, and I am hoping to return to enjoy it later this year.

We closed out our visit with brunch in the property's main restaurant, Harri-mans. Everything was delicious, especially the scones I am still thinking about.

I think we can officially cross downtown Middleburg off of our 'to visit' list, but the Salamander warrants repeating. There are many activities we haven't tapped into yet, and I hear the pool opens next month. A welcomed plunge into spring to thaw out from our arctic winter. —EMILY ELLIS

la LAW & ASSOCIATES
Wealth Management and Planning
Together, for tomorrow.

(301) 229-8500

6111 Tulane Avenue
Glen Echo Maryland 20812-1205
www.lawandassociates.com

Investment Advisory Services offered through Law & Associates, Inc.

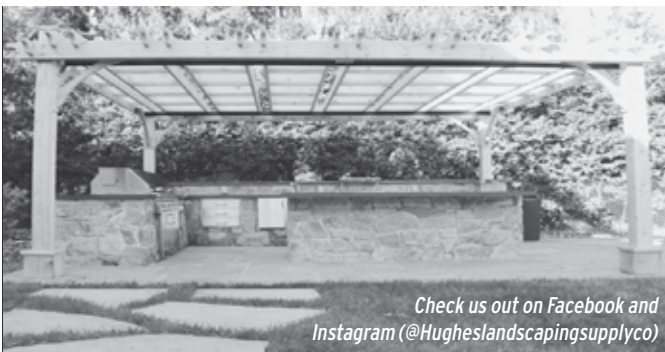
Law & Associates, Inc. is not a registered broker/dealer and is independent of Raymond James Financial Services.

Securities offered through Raymond James Financial Services, Inc.
Member FINRA/SIPC



Hughes Landscaping was founded in 1983 by John Hughes, on the principles of customer service and exceeding customer expectations. Principles that the company still has in place today. Give us a call today to schedule a free estimate at your convenience.

We specialize in patios, deck building, tree care, any kind of yard maintenance, and anything else that you may need done outside of your home.



Check us out on Facebook and Instagram (@Hugheslandscapingsupplyco)

Office: 301-330-4949
Email: Info@hugheslandscaping.com

HAVE YOU HEARD?

Calling all volunteers in Town! Mayor Costello would like to celebrate your contributions at an appreciation event at Town Hall. Come raise a glass—to yourself! And all the many volunteers that make Glen Echo such a community—Friday, April 10, from 5–7 PM at Town Hall. RSVP to townhall@glenecho.gov so they can plan accordingly for light food and drinks.



The Woodall family of Princeton Avenue welcomed **Delaney Lou Woodall**, 7 pounds 11 ounces, at Georgetown Hos-

pital on March 23. Many congratulations to **Alyssa** and **Jeff** as well as big brothers **Hudson** and **Wes!**



Bram Wilson and **Monica Guerra** were married on April 14 in Pasadena, MD. Bram, **Julia** and **Speke Wilson's** son, grew up on University Avenue. The festivities began with bowling and ended with a conga line.

.....
From Helen Atkocius, general manager of the **Bethesda Co-op**: For over

Celebrating our 22nd year in Glen Echo!



ALEC GRAHAM
REALTOR
Licensed in MD/DC
301.320.7719
alec@alecgrahamrealtor.com
www.alecgrahamrealtor.com

COMPASS 5481 WISCONSIN AVENUE
CHEVY CHASE 20815 • 301.586.9236





Another Winterlude is on the books! After a brutally cold winter, a reprieve let residents linger, enjoying the lights, the fire pits, the food, and the company of friends. Thanks to the volunteers! You should all come to the appreciation happy hour on April 10!



fifty years, Bethesda Co-op has held space for all interested in an alternative way of purchasing and consuming food and sundry goods. It has had many iterations, from its beginnings as a buying club to a storefront on Bethesda Avenue. Through it all the Co-op has maintained an inclusive and welcoming environment for all in our community. Sadly, those days are coming to an end. At the end of May, Bethesda Co-op will be closing its doors. Locals interested in seeing another

grocery store at the location—6500 Seven Locks Road—are encouraged write to the building owners: mike@garrett-smith.com and bob@garrett-smith.com and property managers: Paul@KlinedinstMGT.com and Brad@KlinedinstMGT.com. If you are a fan of the Rodman's grocery stores, you can voice support for one in that location, because the owner Nolan Rodman, a Cabin John native, is interested and eager for support.

GOINGS ON

Town Hall Events

- April 1, 8, 15, 22, 29** 8–10:30 PM, FSGW English Country Dance, Wednesdays, free to Town residents
- April 10** 5–7 PM, Volunteer Recognition Reception

Local Events

- April 18** 10 AM–12 PM, Weed Warrior Work Day, meet at the Cabin John Creek trailhead to help remove invasive garlic mustard plants, SSL hours available



- April 25** 10 AM–2 PM, Annual Truck Touch at Suburban Nursery School

Glen Echo Park Events

- April 2, 9, 16, 23, 30** 11 AM, kids story time at the Aquarium
- April 4** 10 AM, 45-minute, ranger-led Civil Rights Tour starting at the carousel, free

- The Puppet Co.** www.thepuppetco.org; 301-634-5380
- Cinderella** through April 19
- Tiny Tots** select Weds, Sats, and Sundays at 10 AM
- Adventure Theater MTC** www.adventuretheater-mtc.org; 301-634-2270
- Aesop's Fables** April 24–May 24

WEDNESDAY, APRIL 8, AT 7 PM

ladies night

MONA KISHORE HOSTING 512-632-9197 7314 UNIVERSITY



THEY SAY IT'S YOUR **BIRTHDAY!**
 April 4, **Archer Anderson**, 7
 April 5, **Diana Chused**, 11
 April 9, **Iris Uy**, 12
 April 27, **Charlotte Cunningham**, 2

I live, *work*, and
have grown my
family here.



KELLY BOHI
OF COMPASS



Kelly Bohi
Realtor DC | MD | VA
kelly.bohi@compass.com
M. 301.580.4991
O. 301.304.8444

Scan Here To Get
in Touch Today!



As your Glen Echo neighbor,
I offer first-hand experience
and expert knowledge of the
neighborhood's market. If
you are thinking of selling
or buying a home in the
upcoming year reach out today
to see how I can help!

COMPASS

Compass is a licensed real estate brokerage that does not discriminate in housing opportunities or services. All measurements and information is provided for informational purposes only. Information is compiled from sources deemed reliable but is not guaranteed. All measurements and information is provided for informational purposes only. Compass is licensed in Virginia and Maryland. Wisconsin Ave, Suite 500, Bethesda, MD 20814 | 301.304.8444



**Washington
Conservatory of Music**

**MUSIC LESSONS
FOR ALL AGES**

Join the Washington Conservatory of Music for private lessons, group classes, and camps for all ages and skill levels.

WashingtonConservatory.org
info@washingtonconservatory.org
 301-634-2250

MacArthur Plaza

MacArthur Boulevard at Seven Locks Road

OFFICES AVAILABLE

Single Rooms
to Large Suites
Floor plans online



Please call
Brad Klinedinst
301-656-7252

www.garrett-smith.com