

The Echo

The Town of GLEN ECHO, MARYLAND Chartered, 1904



October 1999

OFFICIAL PRESENTS PARK BUSINESS PLAN TO COUNCIL

By Sarah Patton

Audrey Calhoun, superintendent of the George Washington Memorial Parkway, on Sept. 13 presented the Glen Echo Town Council with a draft of the business plan for the future management of Glen Echo Park

The plan is a financial analysis of three alternatives for proposed future management of the park: management by the National Park Service, management by a public entity, or management by a private entity.

Once the plan is finalized, a Congressional appropriations committee and the State of Maryland will weigh the merits of the different plans, which all call for federal contributions for the upkeep of the park.

The final form of the business plan will be incorporated into a general management plan for the park which is scheduled for public hearing in February, 2000. After hearing public comments on its plan, the NPS itself will make the final choice from the three alternatives.

The meeting was held upstairs in the town hall to accommodate a number of visitors, including town residents and members of the National Park Service staff.

The conclusions reached by the analysis seemed to support the town's initial response to the three different options: that NPS management is still the best option for the town and also a feasible choice in terms of economic viability. The town council in July, 1998, unanimously approved a letter

stating that the town viewed the NPS as the proper entity to conserve the park and provide the basic financial support of its maintenance and operation.

In stating this position, the town opposed the recommendation of the Glen Echo Park Working Group established by County Executive Douglas Duncan calling for the park to be managed by a non-profit governing board and professional staff. Mayor Debbie Beers said at an Aug. 3, 1998, public meeting on the future of Glen Echo Park that the town opposed "an administrative structure that envisions Montgomery County leasing the park from the NPS, then the county sub-leasing to a non-profit governing board to manage the park which would be responsible only to Montgomery County."

Whatever management plan is chosen, it will not

—continued on page 3

TOWNWIDE YARD SALE

Saturday, October 23, 9:00 a.m.-2:00 p.m.

\$5 per Glen Echo house to participate

Contact Betsy Platt, 301-320-4041

THE ECHO

Published unofficially by, for and in the Town of Glen Echo, Maryland. Distributed free to Glen Echo residents. Subscriptions for non-residents: \$12 per year (to subscribe call Susan Grigsby, 301-229-7735). Copies of *The Echo* on file at Little Falls and Rockville libraries. Total circulation: 190. Distributed the first weekend of the month.

EDITOR	Carlotta Anderson	301-229-3748
ASSISTANT	Diana Hudson-Taylor	
REPORTERS	Sarah Patton	
DISTRIBUTION	Brockie and Jane Stevenson	
	Joe and Susan Gruenspecht	
	Vicki Hewitt	
	Chris Horwitz	
	Isabelle Umpleby	
	Jan and Chelsea Shaut	
CIRCULATION	Susan Grigsby	

Next Deadline October 22

Printed by Allied Printing, Bethesda

Letters to the Editor are welcomed. They must be signed. Articles for publication are also solicited. Any comments about *The Echo* may be addressed to the Editor, the Mayor or any councilmember. Volunteer reporters are always needed. Call the Editor at: 301-229-3748.



Printed on recycled paper

TOWN OF GLEN ECHO MARYLAND

20812

Town Office 301-320-4041

6106 Harvard Avenue or Box 498, Glen Echo, MD

20812

Office Hours: Monday (if holiday, moved to Tuesday),
and Thursday: 9:30 am- 12 noon, or by appointment

MAYOR

Debbie Beers 301-229-7308

COUNCIL MEMBERS

Norman Bernhardt 301-320-2469

Michael Brintnall 301-229-6792

Timothy K. Maloy 301-229-4745

Nancy Long

CLERK-TREASURER

Betsy Platt 301-320-4041

ANIMAL CONTROL OFFICER

ANIMAL CONTROL BOARD

Kathleen Horwitz 301-320-2171

Sarah Patton 301-320-0037

TOWN WEBSITE ADDRESS:

<http://www.glenecho.org>

LETTER TO THE TOWN

Sharon and I would like to thank everyone from the Town of Glen Echo for their friendship, thoughts and prayers during the last month since our father passed away. The flowers you sent were beautiful, and we appreciated the visits from so many townspeople. Your support and friendship made a difficult time much easier.

Dad lived in town for 53 years and had come to know many neighbors throughout that time. We know many will miss him, as we do.

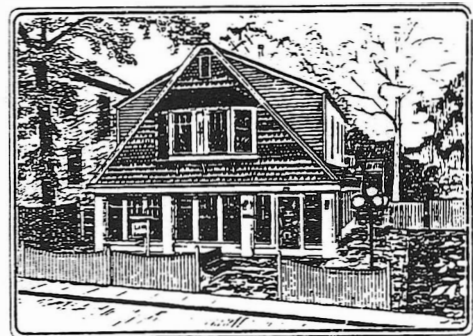
Thank you so much for your kindness.

Sincerely,

Sharon (McNoldy) Kleinfelter

Nancy (McNoldy) Farhood and families

LAW & ASSOCIATES, INC.
(301) 229-8500



Heather Cottage

Financial Planning

PARK OFFICIAL PRESENTS BUSINESS PLAN (FROM PAGE 1)

affect the proposed structural rehabilitation work which would use \$18.9 appropriated from federal, state and county over a three-year period. Both the State of Maryland and Montgomery County have approved their respective \$6 million shares of renovation funding, but the federal contribution has not yet been approved.

In a complicated comparative summary of the three management possibilities over a 15 year period, the draft plan projected total federal costs required under NPS management as \$476,750; under public partnership as \$702,500, and under private partnership as \$253,500. In the latter case, the assumption was that the private entity would have to repay the \$12 million capital costs paid by county and state for the rehabilitation work; the public partnership option assumes the county would provide \$100,000 subsidy for the first four years.

With all of the options, Ms. Calhoun explained, they looked at how they could close the revenue gap by such activities as increasing the fees charged to visitors via the cooperators (park artisans), charging a park entrance fee and parking fee during special events, constructing new facilities to house additional cooperators or other revenue-generating functions, securing governmental subsidies and increasing private contributions.

Under the NPS management scenario the NPS would continue to manage the park, with increased investment in staff, maintenance and operations; the structure of agreements with cooperators would be changed, revenues would be generated by admission fees, leases, short-term rentals and hosting special events.

In the other two options a board of directors would manage and operate the park with the NPS providing various degrees of support.

The lack of specifics provided regarding how the three plans would work in practice made it difficult to judge how the park would be different under each of them from what it is like now. Also unclear was what the revenue-generating possibilities would have on the town itself.

After the presentation, questions were posed by visitors regarding the figures used to calculate the park's revenue under the various options. Some expressed surprise at some of the assumptions that the calculations for potential revenue were based on and after Ms. Calhoun and the NPS staff members left, town council members said that they wished they could see the complete spreadsheets that the calculations were based on.

However, council members voted to reiterate their support for the NPS management plan. Mayor Debbie Beers has written the NPS saying the town "continues to view the NPS as the entity best situated to ensure the long-term viability of the park." She added that since the town understands that

the business plan will be revised to incorporate new economic projections based on data from Montgomery County related to the public partnership alternative, the town would like a new opportunity to comment at that time.

COMBINED FEDERAL CAMPAIGN WILL HELP PARK SECOND YEAR

The Glen Echo Park Foundation has secured a Combined Federal Campaign (CFC) listing for year 2000 after a successful 1999 fund raising when federal employees contributed over \$7,000. Many of those who contributed in 1999 were town residents.

The county plan for the park depends on private contributions towards the operating expenses of the park.

Peter Somerville, town resident and Vice Chair of the Glen Echo Park Foundation, asks that all federal employees consider contributing towards the park through the CFC as a tax efficient way of giving.

The key number to remember is 7583.



Eleanor

"Let's talk about what's
happening up and down
MacArthur Blvd."

907-7600
229-7990



**DECEMBER 31, 1999
SAVE THE DATE!**

The Town of Glen Echo is throwing a New Year's Eve bash. The party will be held in the Glen Echo Town Hall. Several event options are under consideration.

If you have some ideas and/or want to help with party preparations please contact Stacey Malmgren, 301-263-0146, or Cathie Polak, 301-229-6042. Further details will be announced in the November *Echo*.

WELCOME, NEWCOMERS!

A friendly welcome to our new neighbors at 6104 Bryn Mawr Ave., **Joe Andres** and **Kelly McQueeney**. They moved here over the Fourth of July weekend from Alexandria.

What attracted them to Glen Echo was the canal, Great Falls, the Montgomery County school system (for future arrivals) and the "good commute." Kelly finds the commute to her job at Wheaton Party Rentals in Beltsville very easy. Joe is a construction consultant for Barrington Consulting in D.C.

Kelly, who is originally from New Jersey, attended the University of Georgia. Joe who came from Philadelphia, studied civil engineering at Catholic University in D.C. Their household also includes Bear, a one-and-a-half year old part Lab. part Australian Shepherd dog.

Kelly and Joe will be married in November at St. Alphonse's Church in Baltimore, with a reception to be held at the George Peabody Library in that city. They will honeymoon in Hawaii.

CLASSIFIED ADS

BANNOCKBURN NURSERY SCHOOL OPEN HOUSE will be held on Saturday, Nov. 6, from 10-noon. Come meet our teacher, see our classrooms and sign up for our 2000/01 classes for 2-5 year-olds. For directions or more information, call (301) 320-4252. Ask for Shelley Shorb.

Classified ads are free to Glen Echo residents. Fee to non-residents: \$.75 per line of 50 characters or fewer. Display ads: \$4 per column inch. Ads may be left with or mailed to the editor at 38 Wellesley Circle, Glen Echo, MD 20812. Make checks payable to: Town of Glen Echo. Deadline: 24th of each month.

BURNED-OUT STREET LIGHT?

If you see a burned-out street light, you can report it to Pepco by calling 202-833-7500 and giving the location and, preferably, the pole number. You should also note whether it is a wooden or metal pole.

NEXT TOWN COUNCIL MEETING

Monday, October 11—8:00 p.m.
Glen Echo Town Hall
Contact the mayor to add an item to the agenda



Cheese, imported and domestic ▼
▼ Organically-grown produce
Nuts, dried fruit, grains & beans sold in bulk ▼
▼ Health & bodycare, cruelty-free

Serving the community since 1975.

Bethesda Co-op

301-320-2530 6500 Seven Locks Rd., at MacArthur Blvd. Mon.-Sat. 9-9, Sun. 9-7

Around Town

Montgomery County Executive Douglas Duncan has announced that **renovation work** on the run-down buildings at Glen Echo Park is underway. The work to be done on the bumper car pavilion and the "Cuddle Up" will be funded with the county's initial \$2 appropriation (one-third of their total). The federal government has still not approved its one-third share of the \$18.9 million needed...

The town council has voted to adopt a **Y2K emergency plan** that will be based on a model prepared by the Town of Somerset. This calls for the town to check that all outside vendors and service providers to the town are Y2K-complaint. The town has decided it will not be necessary to purchase a generator for the town hall...

Work has not yet begun on the new **U.S. Park Police facility** in Turkey Run, which will replace the quarters currently at Glen Echo Park. In the meantime, the police presence will remain as it is. After the move to Turkey Run, there will be an office and a beat officer who will regularly patrol the park in a newly-constructed building at the park, according to Karen Pittleman, acting site manager...

Longtime Glen Echo resident, the green **Sunbeam Tiger** roadster owned by Jim Anderson has passed on to a better place. The car, which has been in the family for 32 years and in Glen Echo for 30 years, was shipped to Denver in September to be put into the hands of son, Eric, a political consultant, who follows the family tradition of driving it to work...

The results of the **town street survey** regarding parking problems and possible speed bumps will be presented at the October town council meeting...

The **C&O Canal** is about to have the last of its flood control upgrades put in place after the floods that twice devastated the canal in 1996, the *Washington Post* reports. A new reinforced stop lock just below Great Falls will be tested soon. The original lock was built in 1852. A new tethered, break-away bridge, designed to float free in a flood, was installed some months ago just below Glen Echo...

TOWN HALLOWEEN PARTY

Sunday, Oct. 31, 4:00-6:00 p.m.
Glen Echo Town Hall

Residents of all ages welcome

Parents of children who will attend (and other residents) are invited to help with the preparations. Please contact Clerk/Treasurer Betsy Platt, 301-320-7099, or 301-320-4041.

Trick-or-Treat time: dark to 9:00 p.m.

ENGINEERS TO KEEP LOT AS CONSTRUCTION STAGING AREA

Tom Jacobus of the U.S. Army Corps of Engineers has told Mayor Debbie Beers that the Wilson Lane/MacArthur Blvd. lot had been loaned to the county to use as a constructive staging site, but will now be reseeded and probably stay as a grassy lot.

However, in the near future it will be used again as a construction site for repairs to the Union Arch Bridge.

He said the work at the aqueduct interconnector at MacArthur and Goldsboro will probably be completed by the third week of November. It is intended to improve the appearance of the site as well as improve resistance to damage to U.S. Army equipment by vehicles transiting the circle.

Mobil®



KENWOOD MOBIL CENTER

5201 RIVER ROAD
BETHESDA, MARYLAND 20816

Dick Spicer
SERVICE MANAGER
MD STATE INSPECTOR

Ph: (301) 652-9527
Fax: (301) 652-1138

RESIDENT VOLUNTEERS FOR POLICE BOARD

Norman Hudson-Taylor has volunteered to serve on the Montgomery County Police Advisory Board as an unofficial representative from Glen Echo.

He has reported on two serious assaults that occurred near MacArthur Blvd. and the D.C. line.

On Sunday, Aug. 29, at 5:10 a.m., at 6515 Broad St., a 54-year-old woman walking her dog encountered a man, who petted her dog. After they had passed, the suspect doubled back and approached the victim from behind. He grabbed her and began beating her about the face. The suspect then fled. The victim received serious facial injuries and was hospitalized. Description of assailant: black male, 6', 180-200 lbs, close cropped hair, clean-shaven, wearing a gray t-shirt with cut-off sleeves and cut-off blue sweat pants.

On Wednesday, Sept 1, at 5:45 a.m., in the 5100 block of Loughboro Rd. N.W., less than ¼ mile from the first incident, a 35-year-old woman was jogging and was struck on the back of the head with an unknown object and knocked unconscious. She was treated at Sibley Hospital for severe blunt force trauma to her head and face. She did not see her assailant, but this may be related to the previous attack.

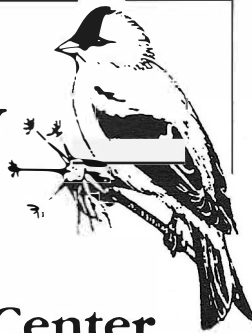
NEED NEW RECYCLING BIN?

If your green recycling bin has been damaged, or if you are a new resident and didn't find a bin when you moved in, you are eligible for a new one.

Just call Clerk/Treasurer Betsy Platt at the town office, 301-320-4041 and let her know if you are trading in an old one or ordering a new one.

Enjoy wildlife at your window

- Feeders
- Birdbaths
- Seed
- Nest Boxes
- Gifts
- Free Birdwalks



Wild Bird Center

The ultimate bird feeding specialty shop™
6124 MacArthur Blvd. • Bethesda, MD
Mon.-Fri. 10-6, Sat. 9-6, Sun. 10-6

(301) 229-2600

FRESH FIELDS CONTRIBUTES \$3,480 TO PLAYGROUND FUND

Thank you to all of you who shopped at Fresh Fields on Wednesday, September 15. The Playground Committee of the Glen Echo Park Foundation had a very successful five percent day, earning a contribution from Fresh Fields of \$3,480.90.

If you stopped by, you probably saw us manning a table by the vegetables and displaying pictures of the new playground equipment. We have now matched the \$5,000 grant offered by the Park Service and have raised over \$33,000.

The Playground Committee has also been actively fundraising in the park, with a table at the existing playground to display pictures of the future playground. Park visitors have shown very enthusiastic support.

Members of the playground committee are: Madeleine Carter (chair), Polina Grant, Lisa Landsman, Debbie Lange, Alison Levine, Stacey and Andy Malmgren, Karen Melchar, Cheryl Rothenberg, Katherine and William Ward, and Julia Wilson.

Paid Advertisement

THE GLEN ECHO BAPTIST CHURCH VASSAR CIRCLE, GLEN ECHO MD.

Jesus Christ is our Lord, Saviour and God. He still performs miracles at the Glen Echo Baptist Church. A born again fellowship. 229-4430.

Sunday Morning: PRAYER 8:00, FAMILY SUNDAY SCHOOL 9:30, WORSHIP AND PRAISE, 11:00. All are invited!!

Sunday Evening: 6:00 WHY WE BELIEVE THE JEWISH BIBLE, 7:00 PRAISE, TESTIMONIES, WORSHIP, SINGING.

Wednesday Evening: 7:00 PRAYER, TESTIMONIES, BIBLE QUESTIONS

Friday Morning: 10:00 COMMUNITY PRAYER AND BIBLE STUDY

Collecting food and clothing for the homeless and needy.

FREE HALL EVENTS FOR GLEN ECHO RESIDENTS

The following activities booked at the town hall are free for town residents:


- Sunday, Oct. 3, 1-5 p.m.**—C&O Canal Assn. Board meeting
- Sunday, Oct. 10, 3:30-5 p.m.**—Folklore Society family dance. Bring a dish to share for the pot-luck dinner that will follow the dance.
- Saturday, Oct. 16, 5:30-8 p.m.**—National Campaign to Save Glen Echo Park Auction
- Wednesday, Oct. 20, 9 a.m.**—Springfield Garden Club
- Every Wednesday, 8:00-10:30 p.m.** English Country Dance. Live music. No experience or partner needed. Sponsored by Folklore Society of Greater Washington.

PARK CAMPAIGN STAGES AUCTION AT HALL OCT. 16

The National Campaign to Save Glen Echo Park will hold an auction of art and services, chiefly from Glen Echo Park artists and instructors, at the Glen Echo Town Hall on Saturday, Oct. 16, from 5:30-8:00 p.m.

There will be wine and light refreshments.

The funds raised will cover continuing expenses for the Campaign, which has been successfully working towards winning government funding for park rehabilitation.



Intimate Dining

*Nestled along the Potomac in historic Glen Echo, Maryland.
Serving American Cuisine - Specializing in Fresh Fish & Seafood,
Fine Wines and Premium Cigars*

Lunch, Dinner, Saturday Breakfast & Sunday Brunch

Information or Reservations - Call (301) 229-2280 Fax 229-2518

LADIES OF GLEN ECHO

You are invited to a Ladies Night

*at Debbie Beers's,
29 Wellesley Circle*

*Wednesday, Oct. 20, 8:00 p.m.
Please RSVP 301-229-7308*


NPS AGREES TO KEEP TANK UNDERGROUND

Responding to concerns expressed by Mayor Beers and two town residents, the National Park Service has decided not to construct an above-ground fuel storage tank at the Clara Barton site. Instead it will retrofit the underground tank already in place.

NPS has also addressed the town's health and safety concerns regarding the furnace building by deciding to extend the height of the chimney and establish a preventive maintenance schedule to ensure that the heating plant is operating both safely and efficiently.

The NPS also informed the town that it has requested funds to design and install a new heating, ventilation and air conditioning system for the Clara Barton House.

*Landscape Design • Installation • Decks
Retaining Walls • Maintenance • Hauling • Gutters*



LANDSCAPING

5454 Butler Road
Bethesda, Maryland 20816

JOHN HUGHES
301-656-3255

GLEN ECHO PARK ACTIVITIES

COMING EVENTS

Saturday, Oct. 23, 2-5 pm—WAMU-FAM PICKIN' IN THE GLEN BLUEGRASS MUSIC FESTIVAL

Sunday, Oct. 24, 1-2 pm—GLEN ECHO PARK BOTANICAL TOUR. A walk through the park's new gardens for a survey of the trees, shrubs, and perennials that thrive in our area. Led by Mother Herb. Reservations required.

Every Friday, traditional country dances

Every Saturday, swing dancing

Every Sunday, contras, square and folk dances

Sunday afternoon tea dances:

First & third Sundays, waltzes.. 3:30-6:00 pm

Second Sundays, Western swing dances

Fourth Sunday, cajun and zydeco

ADVENTURE THEATRE

The Witch's Lullaby

September 18-October 24

Weekends at 1:30 and 3:30

Tickets: \$5.00 Call 301-320-5331

THE PUPPET THEATRE

Peter and the Wolf

September 15-October 17

Toyland

October 20-November 21

Wednesday through Friday, 10:00 & 11:30

Saturdays & Sundays, 11:30 & 1:00

Tickets: \$5 Call 301-320-6668

