

# The Echo

## The Town of GLEN ECHO, MARYLAND Chartered, 1904

---



February 1999

### TOWN HALL BECOMING A DANCE HALL?

By M. Grigsby

At the Jan. 11 town council meeting, Councilwoman Gloria Levin noted that residents had complained to her of the town hall becoming host to too many dance programs. The concern was not the dancing, per se, or its effects on the town hall. Rather, certain residents living closest to the hall feel that its regular usage is adversely affecting their quality of life.

Dances and concerts (including practices) did, in fact, account for more than half of the events that took place in the town hall during the months of November and December, 1998. In order to preserve the notion that regular events are an asset to the town in some fashion, the events are free to Glen Echo residents, and the sponsors are charged a fee. They typically involve more of a "folk culture" program than anything that might truly be described as "mainstream."

The obvious issue involved in any town hall gathering is parking: while the upstairs room can hold over 100 people, the parking lot can accommodate only eight cars. Even modestly attended events can create parking problems for residents. Concerning dances and concerts, the most salient issue is the music, or noise, depending on one's perspective and proximity.

An informal survey of a handful of households on Harvard Avenue uncovered divided, but consistently clear, opinions. Regarding the sound and the traffic: some think the music is nice, some think it's an imposition, some can't hear it

at all. Some find the parking overflow invasive, whereas others find the parking challenges no different from those usually posed by regular Post Office congestion. Other, less frequently cited problems, included littering and overexposure

—continued on page 3

---

### TWO COUNCILMEMBERS TO BE ELECTED MAY 7

A municipal election will be held Monday, May 7, to elect two councilmembers for four-year terms. There is no salary for the offices.

The seats up for election are currently held by Councilmembers Gloria Levin and Nancy Long. Neither has yet indicated whether she will run for re-election.

The charter requires that anyone wishing to run for office must file a written declaration of candidacy by no later than 20 days prior to the election. Contact Clerk-Treasurer Betsy Platt at the town office, (301) 320-4041, for further information.

Candidates must be registered Glen Echo voters who have resided in the town at least one year prior to the election, and be at least 25 years of age. They are not required to be U.S. citizens.

## THE ECHO

Published unofficially by, for and in the Town of Glen Echo, Maryland. Distributed free to Glen Echo residents. Subscriptions for non-residents are \$10 per year. Copies of *The Echo* are on file at the Little Falls and Rockville libraries. Total circulation: 190. Distributed the first week-end of the month.

<b>EDITOR</b>	Carlotta Anderson	301-229-3748
<b>ASSISTANT</b>	Diana Hudson-Taylor	
<b>REPORTERS</b>	M. Grigsby	
<b>DISTRIBUTION</b>	Brockie and Jane Stevenson	
	Joe and Susan Gruenspecht	
	Vicki Hewitt	
	Jillian Horwitz	
	Sally Law	
	Jan and Chelsea Shaut	
<b>CIRCULATION</b>	Susan Grigsby	

**Next Deadline February 19**

**Printed by Allied Printing, Bethesda**

Letters to the Editor are welcomed. They must be signed. Articles for publication are also solicited. Any comments about *The Echo* may be addressed to the Editor, the Mayor or any councilmember. Volunteer reporters are always needed. Call the Editor at: 301-229-3748.



Printed on recycled paper

### Paid Advertisement

## THE GLEN ECHO BAPTIST CHURCH

VASSAR CIRCLE, GLEN ECHO MD.

Jesus Christ is our Lord, Saviour and God. He still performs miracles at the Glen Echo Baptist Church. A born again fellowship. 229-4430.

**Sunday Morning:** PRAYER 8:00, FAMILY SUNDAY SCHOOL 9:30, WORSHIP AND PRAISE, 11:00. All are invited!!

**Sunday Evening:** 6:00 WHY WE BELIEVE THE JEWISH BIBLE, 7:00 PRAISE, TESTIMONIES, WORSHIP, SINGING.

**Wednesday Evening:** 7:00 PRAYER, TESTIMONIES, BIBLE QUESTIONS

**Friday Morning:** 10:00 COMMUNITY PRAYER AND BIBLE STUDY

Collecting food and clothing for the homeless and needy.

## TOWN OF GLEN ECHO MARYLAND

20812

Town Office 301-320-4041

6106 Harvard Avenue or Box 498, Glen Echo, MD  
20812

**Office Hours:** Monday (if holiday, moved to Tuesday),  
and Thursday: 9:30 am- 12 noon, or by appointment

### MAYOR

Debbie Beers 301-229-7308

### COUNCIL MEMBERS

Norman Bernhardt 301-320-2469

Michael Brintnall 301-229-6792

Gloria Levin 301-320-5068

Nancy Long

### CLERK-TREASURER

Betsy Platt 301-320-4041

### ANIMAL CONTROL OFFICER

### ANIMAL CONTROL BOARD

Kathleen Horwitz 301-320-2171

Sarah Patton 301-320-0037

### TOWN WEBSITE ADDRESS:

<http://www.glenecho.org>

## AUCTION FOR TOWN PIANO

The Town of Glen Echo is officially putting its upright piano up for auction, since it also has a spinet donated by the Folklore Society. Bids should be submitted in writing to Clerk/ Treasurer, Betsy Platt, no later than Monday, February 15th. Bids *must include* any moving expenses, including all costs associated with actually removing the piano from the town hall. Any questions should be directed to Betsy Platt.

**Mobil®**



### KENWOOD MOBIL CENTER

5201 RIVER ROAD  
BETHESDA, MARYLAND 20816

**Dick Spicer**  
SERVICE MANAGER  
MD STATE INSPECTOR

Ph: (301) 652-9527  
Fax: (301) 652-1138

## SNOW OFF WALKS IS RESIDENTS' RESPONSIBILITY

The Town of Glen Echo would like to remind residents of their obligation to clear the snow from all sidewalks abutting their property. This is usually much easier to do soon after the snow has fallen, rather than waiting until it has hardened into ice, as it did last month.

It is self-evident that sidewalks are there because they are needed, especially by children, those pushing strollers, or the infirm. Not clearing your sidewalk imperils those who must then walk in the street.

After the mid-January snowfall, **almost all** residents performed their civic duty admirably. Several of these who live on corners did a fine job shoveling their two, sometimes very long, stretches of sidewalk even though they are not among our younger residents.

However, there were a few who removed the snow from the part of the walkway **they** used, but not the rest of the sidewalk. Unfortunately, this diminishes the work of the great majority, since it is difficult, or even impossible, for pedestrians to walk part of the way on clear sidewalk, only to have to step into the street for the unplowed section before resuming their stroll.

## TOO MANY DANCES? (FROM PAGE 1)

of the town.

A broader concern, articulated by Councilwoman Nancy Long, was that when the Glen Echo taxpayers built the hall, it was intended primarily as a place to be used by the townspeople. Officially, Glen Echo residents have priority over out-of-town users and can usurp a previously scheduled event, if necessary.

Technically, then, the town hall is only used by non-residents at times when it would otherwise be sitting vacant. Yet, neither this situation nor the free resident admission were insufficient to quell the feeling among some residents surveyed that the hall was not being used in a manner wholly in-line with its original purpose, or, more importantly, in a manner which put residents interests first.

One resident who favored the ongoing events in the town hall sees the activities as similar to Glen Echo's keeping a green space around the trolley right-of-way: It's something nice that everybody can enjoy, not just residents.

Another resident, while not disagreeing with that notion, pointed out that Glen Echo residents pay taxes expressly to live in a quiet residential neighborhood, not a commercial area, adding, "The town needs to look into measures that support the rights of *everyone* who lives here."

## LOCAL CRIME

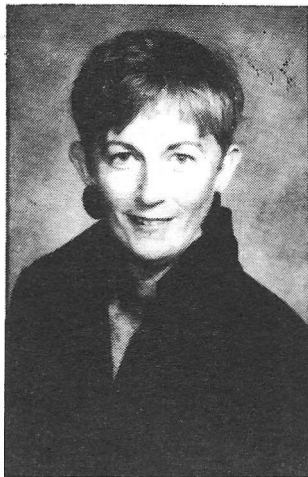
Three nearby schools were vandalized over the period of Jan. 16-18.

Sometime between Jan. 16-18, 32 windows in Bannockburn Elementary School were broken with a hammer, but the school was not entered. Beer bottles were found in the rear of the school.

On Jan. 16, vandals broke the rear window of Woodacres Elementary School and spray-painted one room and a hallway.

A window was broken at Pyle Middle School over the period Jan 17-18. The school was entered, but no damage was done, according to John Dassoulas, crime analyst with the Bethesda District Police Station.

Early in December a car was stolen from 6302 E. Halbert St. in Bannockburn. A series of car break-ins took place at other addresses in that neighborhood on Dec. 9 and 10, according to the *Bannockburn Newsletter*. It reported that many unlocked cars had items stolen from there, while some locked ones had their windows broken. Locked cars with nothing of value in plain sight were left alone.



Eleanor

"Let's talk about what's happening up and down MacArthur Blvd."

907-7600  
229-7990



## ORDINANCE GROUP LOOKS AT MUNICIPAL INFRACTION NOTICES

The Glen Echo committee on ordinance changes took a closer look at the issue of Municipal Infraction Notices (MIN) at a meeting on Jan. 19. MINs are a special tool which can be used by the town when there has been a violation of town ordinances (for example, for abandoned vehicles or construction which doesn't conform to Town laws) but not serious enough to warrant a criminal warrant. A MIN is a civil offense, not a criminal one and does not entail a criminal record, only a financial penalty.

The town, with the help of Wayne Rhodes of University of Maryland Institute for Government Service, is putting together a schedule of fines, which would vary according to the seriousness of the violation.

Certain violations, such as violations of the building code, could cost a violator up to \$400. Other, minor violations would be fined as little as \$10. The town's ordinances would have to specify which of eight varying fines on the scale would apply. Although the town has the power to issue MINs now, the system has not been specifically laid out.

Under the existing system, once a MIN is issued by the town, a District court would hold a hearing and, if applicable, a fine would be levied. The enforcement of the MIN, once issued by the town, would be in the hands of the court and not the town.

--Jim Anderson

### NEXT TOWN COUNCIL MEETING

Monday, February 8—8:00 p.m.  
Glen Echo Town Hall  
Contact the mayor to add an item to the agenda

## Around Town

Best wishes for a speedy recovery to **Andrew Beers**, 5, who broke his shin bone playing soccer in his Wellesley Circle front yard. The "freak accident, as his mother Mayor Debbie Beers calls it, took place over the New Year's weekend.

He will have to remain in a cast up to his hips for 6-8 weeks, and is attending his classes at Bannockburn Elementary School in a pediatric wheelchair...

The Inn at Glen Echo was closed from Friday evening, Jan. 15, until dinner hour Saturday evening due to a **water main break in Glen Echo Park...**

The town mercifully had only a brief interruption of power from the mid-January **ice storm**, although some houses in the Fairway/Bannockburn area were without power for as many as four days...

## CLASSIFIED ADS

**FIDDLE/VIOLIN** classes with **Ellen Jacobs** are now forming in the Glen Echo area for ages 4-adult. **Ellen** teaches classical technique & folk fiddling. She is Suzuki certified & has a master in Ed. Private & small group lessons available. 301-596-7359

*Classified ads are free to Glen Echo residents. Fee to non-residents: \$.75 per line of 55 characters or fewer. Display ads: \$4 per column inch. Ads may be left with or mailed to the editor at 38 Wellesley Circle, Glen Echo, MD 20812. Make checks payable to: Town of Glen Echo. Deadline: 24<sup>th</sup> of each month.*



Cheese, imported and domestic ▼  
▼ Organically-grown produce  
Nuts, dried fruit, grains & beans sold in bulk ▼  
▼ Health & bodycare, cruelty-free

Serving the community since 1975.

# Bethesda Co-op

301-320-2530 6500 Seven Locks Rd., at MacArthur Blvd. Mon.-Sat. 9-9, Sun. 9-7

## PARK TO ENFORCE PET LEASHING ON LAWN

The National Park Service has given notice that it will be enforcing the mandatory leash law as it applies to animals on Federal land, in particular, the lawn near the parking lot at Glen Echo Park.

According to Federal law, all dogs must be on leashes, regardless of their skill in responding to voice commands. The Glen Echo Town Council wants to remind residents that Glen Echo, too, has a mandatory leash law which needs to be observed.

It seems that precious few are those people who actually clean up after their dogs.

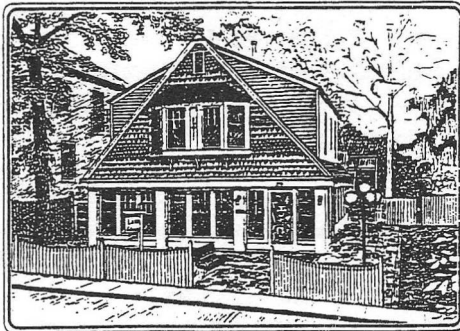
--M. Grigsby

### GLEN ECHO PROPERTY SALES

6108 Princeton Ave.

\$346,000

LAW & ASSOCIATES, INC.  
(301) 229-8500



*Heather Cottage*

*Financial Planning*

## ENVIRONMENT IMPACT OF PLANNED PARK CHANGES MAY BE REQUIRED

By M. Grigsby

An Environmental Impact Statement (EIS) would probably be necessary before Montgomery County could proceed with any of its proposed changes to Glen Echo Park, a park planner from the National Capital Region of the National Park Service told the County Executive's Working Group last month.

This requirement might delay improvements or replacement of buildings at the park.

Patrick Gregerson said that it is now the rule for all parks in the system to have an EIS in connection with the development of a general management plan.

He added that although it is possible to apply for an EIS waiver and instead file a less detailed Environmental Impact Assessment (EIA), in several instances where groups attempted to move forward without an EIS, their haste backfired and the organizations wound up facing resource-consuming law suits.

The implication that an EIS will be required came as a surprise to the town council when it heard of it at its Jan. 11 meeting. The town's attorney had specifically determined that the county could *not* be obligated to perform any significant environmental research when he was questioned on the subject earlier last year by Mayor Beers.

If the county is told to provide an EIS, the effect will probably be to push back the date by which the management of Glen Echo Park will be turned over to a non-profit governing board. The extent of any such delay is unknown.



## Enjoy wildlife at your window

- Feeders
- Birdbaths
- Seed
- Nest Boxes
- Binoculars
- Free Birdwalks

**\$2.00  
Off**

any 40 lb.  
bag of Wild  
Bird Center  
Premium  
seed



**Wild Bird Center**

10124 River Road • Potomac

**765-9453**

*We've moved from Cabin John*

## ANOTHER WATER COOLER GET-TOGETHER FEB. 15

The second gathering of the (Virtual) Water Cooler in January was another success. Photos of Glen Echo Park from many years ago were examined, both those on the walls of the town hall and copies brought to the gathering by Marge Deebo.

An informal get-together around a pot of hot water (rather than a water cooler), this attempt at starting a new town tradition will continue. Gloria Levin, the initiator and host of the first two Water Coolers, will host a third -- on February 15 at 3:30 p.m. in the town hall.

Being President's Day (a Federal holiday), more town residents will be available to attend in the daytime, and meet their neighbors in an informal setting. No RSVP needed, just come.

### FREE HALL EVENTS FOR GLEN ECHO RESIDENTS

The following activities booked at the town hall are free for town residents:

**Saturday, Feb. 6, 8:00 p.m.—Irish Breakfast Bank.**  
Sponsored by Folklore Society

**Saturday, Feb. 13, 9:00 a.m.-7:00 p.m.—Cub Scout  
Pinewood Derby**

**Monday, Feb. 15, 3:30 p.m.—Water Cooler get-  
together**

**Tuesday, Feb. 16, 10:30-1:00—Sunner Garden Club**

**Friday, Feb. 26, 6:30 p.m.—Bannockburn Havurah**

**Sunday, Feb. 28, 3-5:30 p.m.—Family Dance**

**Every Wednesday, 8:00-10:30 p.m. English Country  
Dance.** Live music. No experience or partner  
needed. Sponsored by Folklore Society .

## TOWN TO CONSIDER NEW TRASH COLLECTOR

The town council will soon be soliciting bids from new garbage collection companies. The council agreed at its Jan. 11 meeting that the current provider, Waste Management, had recently under-performed its contractual obligations.

Mayor Debbie Beers has phoned Waste Management on many occasions in the last few months to complain, she said.

The company responded in a Jan. 12 letter saying that it felt it had given the town good service over the last eight years and hoped one or two months of poor service would not result in its losing the trash removal service for Glen Echo.

Waste Management attributed the problems to two holidays falling on regular pick up days, several drivers walking off the job, and bad weather. It assured the town that internal problems had been corrected and the company should soon begin to provide "the type of service to which you have been accustomed.

To compensate for the inconvenience, the company offered \$400 credit on the town bill.


—Carlotta Anderson and M. Grigsby

## LADIES OF GLEN ECHO

*You are invited to a Ladies Night*

*at Diana Hudson-Taylor's  
16 Wellesley Circle*

*Wednesday, February 10, 8:00 p.m.*




**THE INN AT  
GLEN ECHO**

*Intimate Dining*

*Nestled along the Potomac in historic Glen Echo, Maryland.  
Serving American Cuisine ~ Specializing in Fresh Fish & Seafood,  
Fine Wines and Premium Cigars  
Lunch, Dinner, Saturday Breakfast & Sunday Brunch  
Information or Reservations ~ Call (301) 229-2280 Fax 229-2518*

*Landscape Design • Installation • Decks  
Retaining Walls • Maintenance • Hauling • Gutters*



**HUGHES**

**LANDSCAPING**

5454 Butler Road  
Bethesda, Maryland 20816

**JOHN HUGHES**  
301-656-3255