

The Echo

The Town of GLEN ECHO, MARYLAND Chartered, 1904



August 1998

TOWN STATES ITS POSITION ON GLEN ECHO PARK'S FUTURE

By Jerry Bodlander

The Glen Echo Town Council last month unanimously approved a letter stating that the town viewed the National Park Service as "the proper entity to conserve [Glen Echo Park] and provide the basic financial support of its maintenance and operation."

In stating this position, the town opposed the recommendation of the Glen Echo Park Working Group established by County Executive Douglas Duncan that the park be managed by a non-profit governing board and professional staff.

The town's letter, addressed to Audrey Calhoun, Superintendent of the George Washington Memorial Parkway, also formally requested that the Town of Glen Echo be an equal party to any agreement entered into between the NPS, State of Maryland, Montgomery County, and any non-NPS entity. It also said it would require that such an entity be subject to the laws and regulations of the town.

It envisioned "substantially greater operating contributions" from the cooperators in exchange for better leasing arrangements and opportunities to sell park-related items. It expressed optimism that more funds might be available from Congress.

The activities and management of the park are of "crucial concern" to the town, the letter said, because of its

—continued on page 4

CRIME WAVE SHOCKS TOWN 20 AUTOS RANSACKED

By Bonnie Whyte and Carlotta Anderson

Crime hit Glen Echo in the early morning hours on two occasions in July. At least nine cars on Wellesley Circle and Bryn Mawr Ave. were broken into and ransacked in the early morning hours of Friday, July 3. A cell phone, a brief case, wallet, change and cash found in cups and bags were stolen as well as one prized beanie baby.

Two locked cars had windows smashed. The other cars had been left unlocked. It is estimated that the thefts on July 3 occurred between 1:30-4:30 a.m. outside of 36, 39, 47, 50, and 56 Wellesley, and 6003 Bryn Mawr.

A second night of even more serious theft occurred in the early morning hours of Friday, July 17. A window in the rear door of 29 Wellesley Circle was smashed with a huge rock and purses stolen from the kitchen. An attempt was made to steal a car on Yale Ave.

Four cell phones were stolen from vehicles in the second incident, with calls made to New York, DC and Maryland. Two mountain bikes were taken from a closed garage, with a third removed from a porch and abandoned a block away.

Overall, 11 autos were reported ransacked July 17. Four had windows broken, usually for cell phones or for

—continued on page 3

THE ECHO

Published unofficially by, for and in the Town of Glen Echo, Maryland. Distributed free to Glen Echo residents. Subscriptions for non-residents are \$10 per year. Copies of *The Echo* are on file at the Little Falls and Rockville libraries. Total circulation: 190. Distributed the first week-end of the month.

EDITOR Carlotta Anderson 301-229-3748
ASSISTANT Diana Hudson-Taylor
REPORTERS Jerry Bodlander, Bonnie Whyte, Tim Maloy
DISTRIBUTION Brockie and Jane Stevenson
 Joe and Susan Gruenspecht
 Vicki Hewitt
 Jillian Horwitz
 Sally Law
 Jan and Chelsea Shaut
CIRCULATION Susan Grigsby

Next Deadline August 28

Printed by Allied Printing, Bethesda

Letters to the Editor are welcomed. They must be signed. Articles for publication are also solicited. Any comments about *The Echo* may be addressed to the Editor, the Mayor or any councilmember. Volunteer reporters are always needed. Call the Editor at: 301-229-3748.

TOWN OF GLEN ECHO MARYLAND

20812

Town Office 301-320-4041

6106 Harvard Avenue or Box 498, Glen Echo, MD
20812

Office Hours: Monday (if holiday, moved to Tuesday),
and Thursday: 9:30 am- 12 noon, or by appointment

MAYOR
Debbie Beers 301-229-7308

COUNCIL MEMBERS
Norman Bernhardt 301-320-2469
Michael Brintnall 301-229-6792
Gloria Levin 301-320-5068
Nancy Long

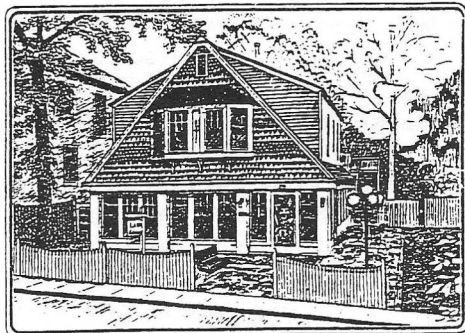
CLERK-TREASURER
Betsy Platt 301-320-4041

ANIMAL CONTROL OFFICER

ANIMAL CONTROL BOARD
Kathleen Horwitz 301-320-2171
Sarah Patton 301-320-0037

TOWN WEBSITE ADDRESS:
<http://www.glenecho.org>

LAW & ASSOCIATES, INC.
(301) 229-8500



Heather Cottage

Financial Planning

TEN WAYS TO FIGHT CRIME

- If you see a crime in progress, call 911
- After a crime has been committed call the police non-emergency number, 301-279-8000. **Note:** Auto vandalism reports will be taken by phone. Only home break-ins or auto theft reports will merit an officer investigating.
- If going on vacation, make sure friends and neighbors keep an eye on home and cars.
- Lock your auto at all times, especially if you have CD players or other items of value.
- If your car is unlocked, make sure cell phones and loose property are not left in the vehicle.
- Lock your house and check windows. Ground floor windows should have nails, bars or screw to prevent easy entry. Doors should have deadbolts.
- Install motion detection lights.
- Put indoor lights on timers.
- Itemize valuables. Photograph all household items and furnishings.
- Own a loud dog.



Printed on recycled paper

CRIME WAVE (FROM PAGE 1)

change.

The second group of thefts occurred throughout Glen Echo. Police reports were filed for 29 and 50 Wellesley; 6000, 6004, 6104 Harvard; 7317 Columbia; 7309, 7315 University; 6105, 6106 Yale; 6006 Princeton.

Police were called about 3:30 a.m. July 17 by a citizen who saw a tall, fit, black man in black clothing and surgical gloves going through an auto at University and Yale Aves. He was not in the area when the police arrived 20 minutes later.

Ofc. Jim Barnette, a policeman primarily assigned to the Glen Echo area, took some of the reports from the victim residents. He followed up on some of the cell phone calls made on the stolen phones before service was cut off by the owners. He said some calls were made to pagers and the owners did not call back. Everyone who answered had a Jamaican accent, he said, sounded elderly and claimed to know nothing about the calls.

He was able to get a fingerprint from a key used in an attempt to start a car (it was the wrong key) and has sent it off to the lab. "We might get lucky," he said. He commented that it was "awful brazen to bust out a kitchen window."

The Montgomery County Police investigation is ongoing. Anyone with additional information should contact Sgt. Greg Shores at 301-657-0962.

The area off Massachusetts Ave. in the Bannockburn/Woodacres/Goldsboro neighborhood, as well as Chevy Chase, has been hit by a rash of similar vehicle break-ins and actual auto thefts in July, according to Lt. Dan Waring of the Bethesda Police District. In the Ft. Sumner area, computers and/or TVs were stolen from three homes during daylight hours in just one day in July.

Bethesda District crime analyst John Dassoulas notes that Glen Echo's crime is part of a bigger, ongoing pattern in the area. He speculated it could be a pair working together or even one person working alone. Most of the crime was for quick cash, since phones are not worth much when turned off.

Stolen cars have often been recovered locally, indicated it is someone from the area, possibly doing it "for a thrill." Lt. Waring indicated that police patrol presence on the side streets in town would increase.

Suspects are likely to be youth cruising late at night or walking through town. Of tremendous concern to residents is the fact that the town has been the target of two "sprees," both on late Thursday/early Friday, which have escalated from breaking into cars to breaking into houses.

GLEN ECHO MOBILIZES TO PROTECT ITSELF

By Bonnie Whyte and Carlotta Anderson

Somehow, Glen Echo has been a relative haven from the crime storm in the metropolitan area. But crime has been all around and residents had "a false sense of security," according to Bethesda police crime analyst John Dassoulas. "You've just been lucky until now."

In an effort to grapple with a perceived new threat, the town is investigating prevention methods.

Mayor Debbie Beers, a crime victim herself, is looking into the possibility of hiring a private security patrol of town, as some other local municipalities do. The mayor said a patrol may be appropriate for at least this summer period when many residents are out of town. She noted, however, that hiring patrol guards would necessitate raising town taxes.

An alternative method is setting up a "Neighborhood Watch" program. With the mayor's support, John Wells, a member of the Bethesda Police Advisory Board, and Eleanor Balaban, another crime victim, have organized a crime prevention meeting at the town hall on Thursday, Aug. 13, at 7:00 p.m.


Frank Mathers, Bethesda District crime prevention officer, will discuss the Neighborhood Watch program and ways to crime-proof your home. All Glen Echo residents are strongly urged to attend this meeting so the community can work cooperatively to eradicate the crime problem.

Meanwhile, a significant number of motion detector lights have been installed by residents throughout town.

Eleanor Balaban has started recruiting volunteers interested in participating in a Neighborhood Watch program. Residents are encouraged to call her at 301-229-7990 if interested. Those who tend to drive or walk through town during night time hours are particularly sought.

Police recommend that residents walk in pairs or small groups to make their presence known.

*Landscape Design • Installation • Decks
Retaining Walls • Maintenance • Hauling • Gutters*



HUGHES

LANDSCAPING

5454 Butler Road
Bethesda, Maryland 20816

JOHN HUGHES
301-656-3255

TOWN'S POSITION (FROM PAGE 1)

location within Glen Echo's municipal boundaries.

In a discussion that preceded the vote, Councilwoman Gloria Levin stated that the status quo cannot be maintained even if the town might like that. She cautioned the town not to be seen as intransigent and in opposition to any change.

Councilman Norman Bernhardt stressed that the town must be seen as a partner in whatever is decided for the park.

Councilman Mike Brintnall said the letter gives the town enough flexibility to deal with whatever issues may develop. He said the council should be careful not to dig in its heels.

Councilwoman Nancy Long said she found the time allotted for the planning process "far too short." The mayor said she had asked the town attorney to look into whether there is a way to slow the process down and extend consideration past the Sept. 1 deadline.

DUNCAN ANNOUNCES PLAN FOR NON-PROFIT TO RUN GLEN ECHO PARK

By Carlotta Anderson and Tim Maloy

County Executive Douglas Duncan announced last month that the working group he set up to study Glen Echo Park's future has concluded that it should be managed by a private, nonprofit governing board.

Under this scenario, the park would remain part of the National Park Service and the NPS would retain oversight responsibility for the physical site and the programs. Montgomery County would oversee rehabilitation of the structures, expected to cost around \$19 million, which would be provided equally by the county, state and federal governments.

A non-profit entity rather than the NPS would be responsible for the day-to-day management of the park. It would report to the county government.

The goal would be for the park programs to operate in the black within five years, according to Dwain Winters, a member of the Glen Echo Park Working Group, who outlined the proposal at a July 16 press conference held at the park. Revenues generated in the park would be reinvested in the park, which is not possible according to the present regulations.

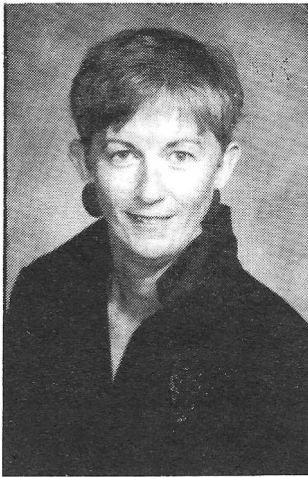
The reconstruction plan includes rebuilding the Arcade area, preserving its historic Art Deco lines, restoring the ballroom and its former beer garden area, and upgrading the utilities. The work is expected to take five years and not interrupt the regular programs.

The user fees will probably go up in some cases, Mr. Winters said, but will continue to be affordable. There will be no general admission.

The 25-member working group was appointed by the county executive in April after the NPS said it couldn't continue because of insufficient funds. The park should be preserved, said Carol Leahy, of Adventure Theatre and a working group member, because it is "vital to the artistic well-being of the Greater Washington area. She said the group looks forward to its "reinvigoration in the Chautauqua spirit."

Mr. Winters noted that a "minority opinion" on the working group wanted continued management by the NPS. This was the Town of Glen Echo, represented by Town Councilwoman Nancy Long, who had asked to have a town official speak at the press conference but was turned down.

The next step is "to hear what the community has to say" at the Aug. 3 town meeting at Pyle Middle School (see p. 7), Douglas Duncan said. The working group will meet again and submit a scenario to the NPS by the Sept. 1 deadline.



Eleanor

"Let's talk about what's happening up and down MacArthur Blvd."

907-7600
229-7990

 **LONG & FOSTER**
REALTORS®

COUNCIL HEARS FROM GLEN ECHO PARK COOPERATORS

By Jerry Bodlander

A group of cooperators from Glen Echo Park told the Glen Echo Town Council last month of discontent with some aspects of the park's management by the National Park Service. They expressed support for the recommendation of the Glen Echo Park Working Group to transfer management to a non-profit governing board with continued NPS ownership and oversight.

Allan Stevens, of The Puppet Co., said the cooperators feel that the offer of Montgomery County to fund one-third of the park's future capital costs and provide operating subsidies for the first four years of its operation by the non-profit governing board is "an extremely generous one" and they support it "wholeheartedly."

Mr. Stevens said that everything the Glen Echo Park Working Group set up by County Executive Douglas Duncan has proposed is in keeping with what the cooperators have been asking for.

Mayor Debbie Beers asked why the acceptance of a plan that envisions one-third county money, one-third state money and one-third federal money is necessarily connected to turning over management of the park to an outside group, the non-profit governing board. Mr. Stevens said that given the money involved, any entity putting in that much money was going to want to protect its investment.

Carol Leahy of Adventure Theatre said it would be naïve to think the county would drop \$6.3 million "in our laps and not have someone on the board to make sure we're headed in the right direction." She says the county executive has proven that he wants to preserve and stabilize the park so it can continue to provide arts education, and has emphasized that the board will have representatives from the surrounding community and from the cooperators.

Mayor Beers told the cooperators that the consensus of the Glen Echo Town Council is that the Duncan group does not represent the constituency of the town and the surrounding community. She said that is so because of the makeup of that group. Its 25 members include six cooperators; one representative from the town; one from the Bannockburn Civic Association; one each from the Glen Echo Park Foundation, the National Campaign to Save Glen Echo Park (Betsy Platt, Yale Ave. resident), Preservation Maryland, and the Arts Council of Montgomery County; nine from the county government; one from the state government; and three from the federal government.

The town very much supports what is going on at the park now, she said, "to a greater extent perhaps than anyone else in this scenario."

In issuing its management scenario recommendation, the Glen Echo Park Working Group cited a minority position

in opposition put forth by Nancy Long, representing the Town of Glen Echo. It held that there is no need to replace the NPS in park management, only to provide a substantial infusion of money to rehabilitate structures.

Several townspeople spoke up at the July 13 town council meeting. Princeton Ave. resident Phyllis Fordham said traffic is already a problem, especially school busses, which are noisy and "belch fumes." She said the proposal for The Puppet Co. and Adventure Theatre to expand their programs in order to become more financially self-sufficient would result in worse noise and fumes. She said she thinks the Duncan panel was biased because it didn't take into account the quality of life in the community.

Willem Polak of Princeton Ave. said the county executive is looking for ways to generate revenue and that's contrary to what many people think the park service is there for. He proposed that the town request equal status with the federal, state, and county agencies in drafting a final agreement and that it have a formal seat and full voting rights.

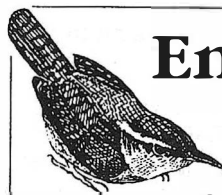
Wellesley Circle resident Debbie Lange, who favored the Duncan proposal, said she thought the park, which already looks much better than in the past, would look even better with money available. She said she envisions more of "the same, but better," spread out evenly during the week, rather than concentrated in special events.

NEXT TOWN COUNCIL MEETING

Monday, August 10—8:00 p.m.

Glen Echo Town Hall

Contact the mayor to add an item to the agenda



Enjoy wildlife at your window

- Feeders
- Birdbaths
- Seed
- Nest Boxes
- Binoculars
- Free Birdwalks



Wild Bird Center

10124 River Road • Potomac

765-9453

**\$2.00
Off**

any 40 lb.
bag of Wild
Bird Center
Premium
seed

We've moved from Cabin John

Around Town

Fox Morning News interviewed several townspeople in a broadcast live from Glen Echo Wednesday morning, July 9. Because of a heavy downpour, the program was shot inside the post office. Mayor Debbie Beers, Betsy and Jamie Platt, and Postmistress Zuleika (Sue) Bradbury were interviewed...

Resident **Renny Springuel** was seen cutting back overhanging foliage along the MacArthur Blvd. bike path at the Goldsboro circle. This public-spirited town resident also volunteered to paint the yellow lines on town streets earlier this year...

The new bridge being constructed across the **C&O Canal** below Glen Echo now spans the canal and the planking is being put in place. The bridge will not be directly attached to the foundation. It will be attached to three concrete blocks in the canal bed by three cables of increasingly longer lengths. The cables will hold the bridge and guide it to the bank if flood waters sweep it away in the future...

The **Youth Conservation Corps**, which built the path leading to the canal from the Union Arch Bridge, did some maintenance work on it last month. Corps workers planned to improve the design, remove the steps and deal with erosion problems...

An article in the *Montgomery Gazette* of July 24, "A bridge to Cabin John's history," covered the **history of the Union Arch Bridge** (popularly known as the Cabin John Bridge), built in 1861. The bridge carries the Washington Aqueduct over Cabin John Creek. The article included several photos of the bridge under construction. For 40 years after its construction, it was the largest single-span stone arch in the world, 451 feet long, with an arch of 220 feet...

The National Park Service is appealing for return of boxes of **files kept by Clara Barton** on the third floor of a building at 437 Seventh St. NW. They contained information on missing Civil War soldiers. When the building was being prepared for demolition last year, a carpenter contacted NPS and alerted them to the boxes. However, someone took some of the boxes before the carpenter led officials to the attic storage space there...

CRIME PREVENTION MEETING

Thursday, August 13, 7:00 p.m.
Glen Echo Town Hall

Frank Mathers, Bethesda Police District Crime Prevention Officer will discuss Neighborhood Watch programs and other crime prevention methods.

All residents urged to attend

OTHER NEARBY CRIME

Friday, July 17, 9:00 p.m. Young man badly beaten by another young man. Seven police cars and an ambulance responded. Assailant is a 6'7" tall, 220 lb. Cabin John man. A warrant for his arrest had not been served at press time.

Tuesday, July 21. Worker repairing MacArthur Blvd. aqueduct pipes near Cornell Ave. had cooler taken from his truck while he was down in a manhole. He found the cooler thrown into bushes on the old trolley right-of-way. Cigarettes, candy taken.

Paid Advertisement

THE GLEN ECHO BAPTIST CHURCH VASSAR CIRCLE, GLEN ECHO MD.

Jesus Christ is our Lord, Saviour and God. He still performs miracles at the Glen Echo Baptist Church. A born again fellowship. 229-4430.

Sunday Morning: PRAYER 8:00, FAMILY SUNDAY SCHOOL 9:30, WORSHIP AND PRAISE, 11:00. All are invited!!

Sunday Evening: 6:00 WHY WE BELIEVE THE JEWISH BIBLE, 7:00 PRAISE, TESTIMONIES, WORSHIP, SINGING.

Wednesday Evening: 7:00 PRAYER, TESTIMONIES, BIBLE QUESTIONS

Friday Morning: 10:00 COMMUNITY PRAYER AND BIBLE STUDY

Collecting food and clothing for the homeless and needy.

BUSSES AVAILABLE FOR SENIORS AT CLARA BARTON CENTER

Transportation has become easier for those interested in taking advantage of the Senior Program offered every Wednesday at the Clara Barton Community Center in Cabin John. A simple phone call for a reservation will summon a bus to pick and return any senior in the Glen Echo area.

The Clara Barton Senior Program meets Wednesdays from 10:00 a.m.-2:00 p.m. with exercise and speakers. The Center is located at 7425 MacArthur Blvd. in Cabin John.

To make a bus reservation, call 301-468-4540 and ask for Pat or Diane. A bus will pick you up between 9:00-9:30 and bring you back between 2:30-3:00.

TOWN MEETING TO DISCUSS A MANAGEMENT SCENARIO FOR THE FUTURE OF GLEN ECHO PARK

Monday, August 3, 7:00 p.m.
Thomas W. Pyle Middle School
6311 Wilson Lane

Opportunity for public comment on the county plan to save Glen Echo Park announced by County Executive Douglas Duncan on July 16.

An official from the Town of Glen Echo will be on the agenda. The town opposes the plan.

LADIES OF GLEN ECHO

You are invited to a Ladies Night

*at Phyllis Fordham's,
6103 Princeton Ave.*

Thursday, Aug. 20, 8:00 p.m.
RSVP 301-263-0552

23 LETTERS SENT TO VIOLATORS OF VEGETATION CUTBACK DATE

Letters were sent last month to 23 residences where vegetation overhanging sidewalks and streets had not been removed by the June 30 cutback date. Once reminded, most of those in violation complied.

On Wednesday, July 15, Clerk-Treasurer Betsy Platt accompanied a landscaping crew to show them the vegetation that still required trimming at three locations.

As announced in *The Echo* and by town bulletin, those who did not clear their vegetation from sidewalks and streets by the due date will be billed by the town for the work performed.



Cheese, imported and domestic ▼
▼ Organically-grown produce
Nuts, dried fruit, grains & beans sold in bulk ▼
▼ Health & bodycare, cruelty-free

Serving the community since 1975.

Bethesda Co-op

301-320-2530

6500 Seven Locks Rd., at MacArthur Blvd.

Mon.-Sat. 9-9, Sun. 9-7

TOWN COUNCIL NOTES FOR JULY 13

By Jerry Bodlander

The council approved a one-year extension of the **cable TV franchise agreement**. Mayor Beers noted that it was a non-exclusive license, so anyone could come in and negotiate another license. Glen Echo was the last municipality in the county to approve the extension.

The council also approved an agreement to have the Maryland Municipal League function as town agent to negotiate with the cable companies. The mayor said the larger municipalities have been squabbling over how to divide up the franchise fee that comes in. The town only gets around \$500.

The county intends to route the **new storm drain** around the Sycamore tree on lower Harvard Ave., it has written the town.

The town has been offered a **piano** by The Folklore Society of Greater Washington, which often hosts concerts at the town hall. Clerk/Treasurer Betsy Platt said musicians checked it out and said it was okay. Mayor Beers suggested that once the new one arrives, the town offer the old one, via an ad in *The Echo*, to anyone who will take it away, or sell it for \$25...

Two representatives of Pepco did an **energy conservation walk-through** at the town hall, Councilman Bernhardt reported. A report will be available for the next meeting...

Councilman Bernhardt said the town needs a mechanism so people can quickly learn about such events in town as the **recent rash of car break-ins**. He said people should report the incidents to the police and also call the town hall, although he acknowledged he didn't know how the town would disseminate the information...

CLASSIFIED ADS

SMALL STUDIO SPACE SOUGHT in local home or structure to use several hours weekly on average. **Mature artist, teacher, counselor & cat-sitter. Exchange house-sit, cat-sit, plant care if possible. References. (301) 320-0537 message.**

ACUPUNCTURIST seeking new office space. **Lost lease on current space due to expansion of lessor's business. Have been in private practice for the past 14 years (last 7 in Glen Echo). Looking for my own full-time room (or suite) if possible. Please call Cherie Finkelstein, 301-229-8151.**

Classified ads are free to Glen Echo residents. Fee to non-residents: \$.75 per line of 55 characters or fewer. Display ads: \$4 per column inch. Ads may be left with or mailed to the editor at 38 Wellesley Circle, Glen Echo, MD 20812. Make checks payable to: Town of Glen Echo. Deadline: 24th of each month.



Accredited Maryland State
Dept. of Education
Est. 1975

Nursery Kindergarten

AGES 2 TO 6
SEPTEMBER TO JUNE

- Mornings 9:30-12:30
- Before And After School Hours Available
- 2, 3, Or 5-Day Program Available
- Half-Day And All-Day Programs

New Location

Trinity & Korean Presbyterian Churches

7009 Wilson Lane • Bethesda, MD 20034

(301) 263-0337 (301) 299-5779

Transportation Available

Pat Dunnavant, Director • Fully Qualified Staff



Intimate Dining

*Nestled along the Potomac in historic Glen Echo, Maryland.
Serving American Cuisine ~ Specializing in Fresh Fish & Seafood,
Fine Wines and Premium Cigars
Lunch, Dinner, Saturday Breakfast & Sunday Brunch
Information or Reservations ~ Call (301) 229-2280 Fax 229-2518*

**THE POTOMAC VALLEY
SCOTTISH FIDDLE CLUB**

**invites Glen Echo Town Residents to a
SCOTTISH DANCE PARTY
August 16, 2:00 p.m.
Glen Echo Town Hall**

**Many dances suitable for beginners
Admission free to town residents**

**Music includes fiddles, dulcimer, cello, piano, guitar,
flute and accordion, led by Elke Baker, Music Director**

**TOWN CONSIDERING NEW
ANIMAL CONTROL LAWS**

The town could adopt the county animal control code in essence, but make some modifications, Councilman Mike Brintnall told the town council last month. The town ordinance might have a stricter definition of "dogs at large," for example. The county allows a dog to be under voice control; the town would have it leashed.

The town could also add a section that would eliminate all animals except dogs and cats or pets characteristically kept indoors in private residences.

The town animal control officer could have authority only over non-emergency, non-major issues, such as dogs at large, barking dogs, dog feces and keeping an unapproved type of pet.

The town attorney has these proposals, Mayor Beers said, but hasn't studied them yet.

The county also is thinking about revising its animal control ordinance, Councilman Brintnall said.

--Jerry Bodlander

Mobil®



KENWOOD MOBIL CENTER

5201 RIVER ROAD
BETHESDA, MARYLAND 20816

Dick Spicer
SERVICE MANAGER
MD STATE INSPECTOR

Ph: (301) 652-9527
Fax: (301) 652-1138

**FREE HALL EVENTS
FOR GLEN ECHO RESIDENTS**

The following activities booked at the town hall are free for town residents:

Sunday, August 2--C&O Canal Assn. Board meeting, 1:00-5:00 p.m.

Saturday, Aug. 15 and Sunday, Aug. 30--National Campaign to Save Glen Echo Park meetings.

Sunday, Aug. 16--Scottish Dance Party, 2:00 p.m.

Every Wednesday, 8:00-10:30 p.m. English Country Dance. Live music. No experience or partner needed. Sponsored by Folklore Society of Greater Washington.

TRASH/RECYCLING COLLECTION TIMES

Tuesday & Friday--all trash, except heavyweight objects.

Tuesday--recyclables, including plastic, metal and glass. Newspapers tied or in paper grocery bags. Garden refuse, cut into four-foot lengths and tied, placed in compostable leaf/grass bags, or in a large trash container labeled "Recycling" and used only for yard waste.

Last Wednesday of the month--heavy or large quantity of discardables.

If you have any trash or recycling pick up problems call Waste Management directly at 301-340-0774 and ask for Dispatch.

EXTRA ECHOS AVAILABLE

If you didn't get your copy of *The Echo* or would like an extra one, there are a few left each month at the Glen Echo post office.

Just ask a clerk for one.

GLEN ECHO PARK ACTIVITIES

LABOR DAY ART SHOW AT PARK SEPTEMBER 5-7

The National Park Service is sponsoring its 28th Annual Labor Day Art Show at Glen Echo Park on Sept. 5-7, from noon until 6:00 p.m.

An opening reception will be held Friday, Sept. 4, from 7:00-9:00 p.m.

The work of more than 100 artists will be on display in the Spanish Ballroom. The exhibit will include paintings, drawing, pottery, jewelry and more. Most items will be for sale.

DANCES

Every Saturday night swing dancing or cajun/zydeco

Every Friday, traditional country dances

Every Sunday, contras, square and folk dances

Sunday afternoon tea dances:

First & third Sundays, waltzes, foxtrots and ballroom, 3:30-6:00 pm

Second and fourth Sundays, traditional American and international dancing for all ages and abilities, 3:00-5:30 pm

Every Monday, swing, shag, charleston, jitterbug

TOWN OF GLEN ECHO ORDINANCE COMMITTEE MEETING

Tuesday, August 11, 8:00 p.m.
Glen Echo Town Hall

Topic: Public Ethics and Building Permits

All residents encouraged to attend

ADVENTURE THEATRE

The Adventures of a Bear Called Paddington

August 1 through September 6

Weekends at 1:30 and 3:30

Tickets: \$5.00 Call 301-320-5331

THE PUPPET THEATRE

Dinosaurs Forever!

Through September 6

Wednesday through Friday, 10:00 & 11:30

Saturdays & Sundays, 11:30 & 1:00

Tickets: \$5 Call 301-320-6668

ATTENTION BUSINESS OWNERS!

Do you run a business in the Town of Glen Echo? If you do, you need to register your business with the Maryland State Department of Assessment and Taxation. This department will assess the value of the personal property used by your business. You are required to pay personal property tax to the State, County, and Glen Echo on this assessed value.

To register your business or get further information, call:

Incorporated businesses (410) 225-4991

Unincorporated businesses (410) 225-1170, or request that a form be sent to you.

Or, you can contact the State in writing at:

Department of Assessment and Taxation
301 W. Preston St., Rm. 806
Baltimore, MD 21201

Corporations must file their charters with the state and renew these applications yearly when filing their returns.